

BENTON GUN CLUB
600 YARD HIGH POWER RIFLE RANGE
SUPPLEMENTAL INSTRUCTIONS
FOR CONSTRUCTION OF THE PITS, 200YD AND 300YD
SHOOTING BERMS

1. The project is to be bid as two projects; project #1 is the construction of the backstop and construction of the 200 yard and 300 yard shooting berm.
2. Project #1 shall have a base bid and an alternate bid; the base bid shall consist of the backstop with a 50ft long crest and the 200/300yd shooting berm with a 40ft crest. The alternate bid shall have the backstop crest with a 75ft crest and the 200/300yd berm with a 60ft crest.
3. Project #2 shall have a base and an alternate bid; the base bid shall consist of a 40ft pit wall with retaining walls on each end. It shall also encompass the soil fill required on the face of the pit and retaining walls and any final site grading necessary to divert any water or debris from washing into the pit area. The alternate bid will consist of all the above with a 70ft pit wall instead of the 40ft wall. The four inch concrete roof over the pit area shall be priced as an added alternate to both the base and alternate bids.
4. On both project #1 and #2 the top six inches of soil on the backstop, the pit wall berm and the 200/300yd shooting berm shall be rock free soil capable of sustaining the growth of grass.
5. Upon completion of the dirt work and acceptance by the Benton Gun Club Range officials the berm and backstops shall be fertilized seeded to establish grass on the exposed soil.

3/4" Galv. A 307 Bolt
24" O.C IN RECESSES
TOP. EMBEDDED IN
EPOXY ADHESIVE

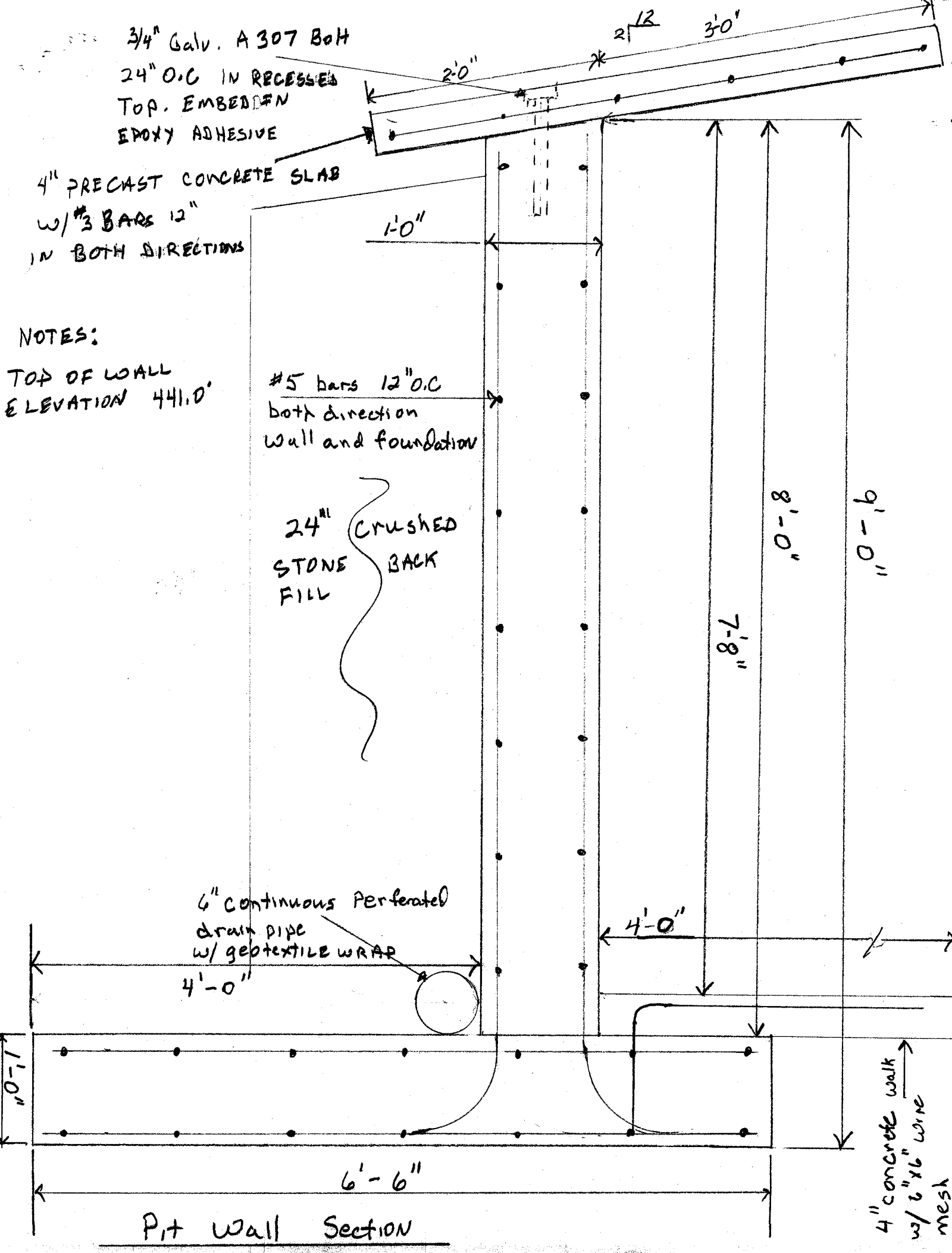
4" PRECAST CONCRETE SLAB
w/ #3 BARS 12"
IN BOTH DIRECTIONS

NOTES:
TOP OF WALL
ELEVATION 441.0'

#5 bars 12" O.C
both direction
Wall and foundation

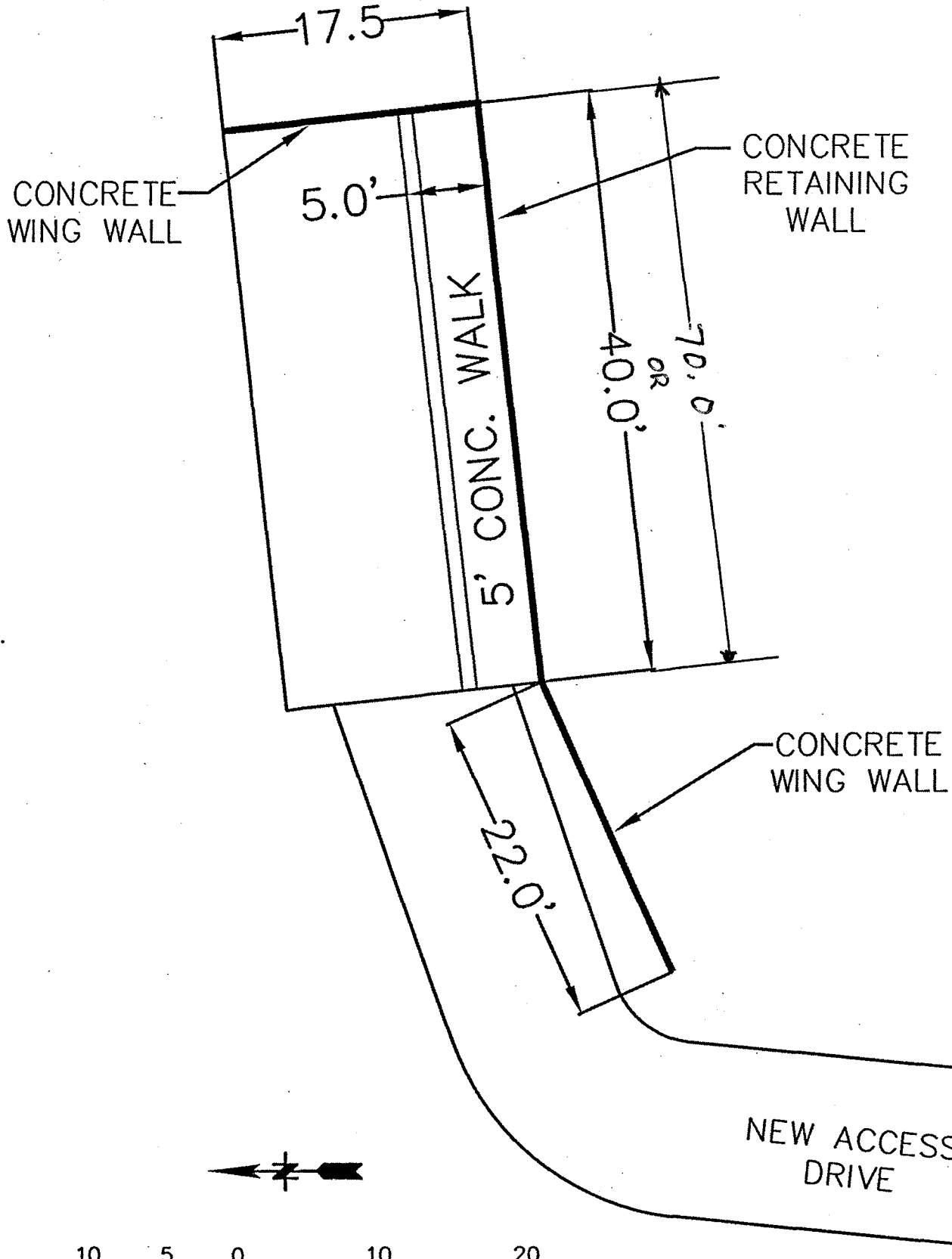
24" CRUSHED
STONE BACK
FILL

6" continuous Perforated
drain pipe
w/ geotextile WRAP



Pit wall Section

4" concrete walk
w/ #6 wire
mesh

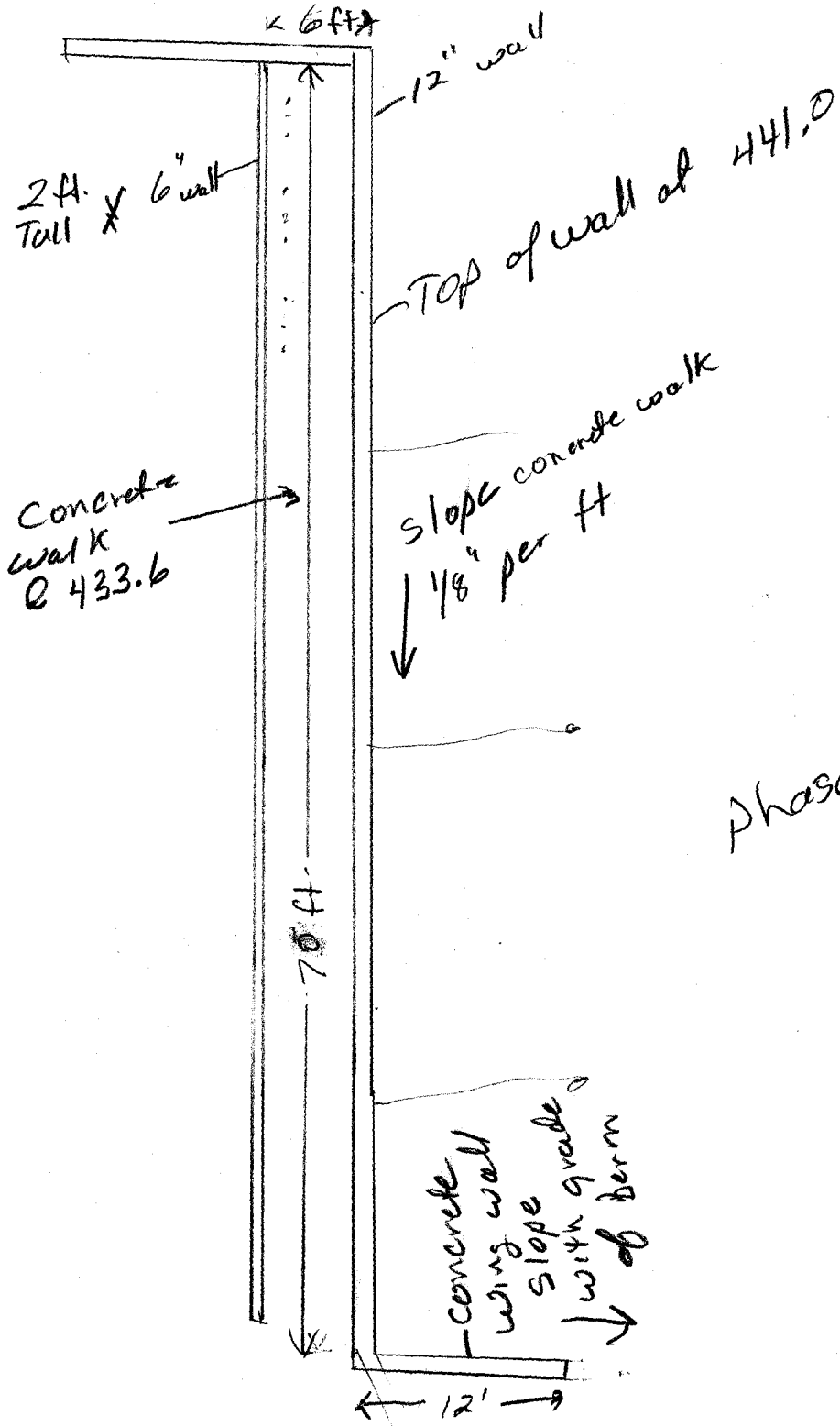


DSGN _____
 OR _____
 CHK _____
 APVD _____

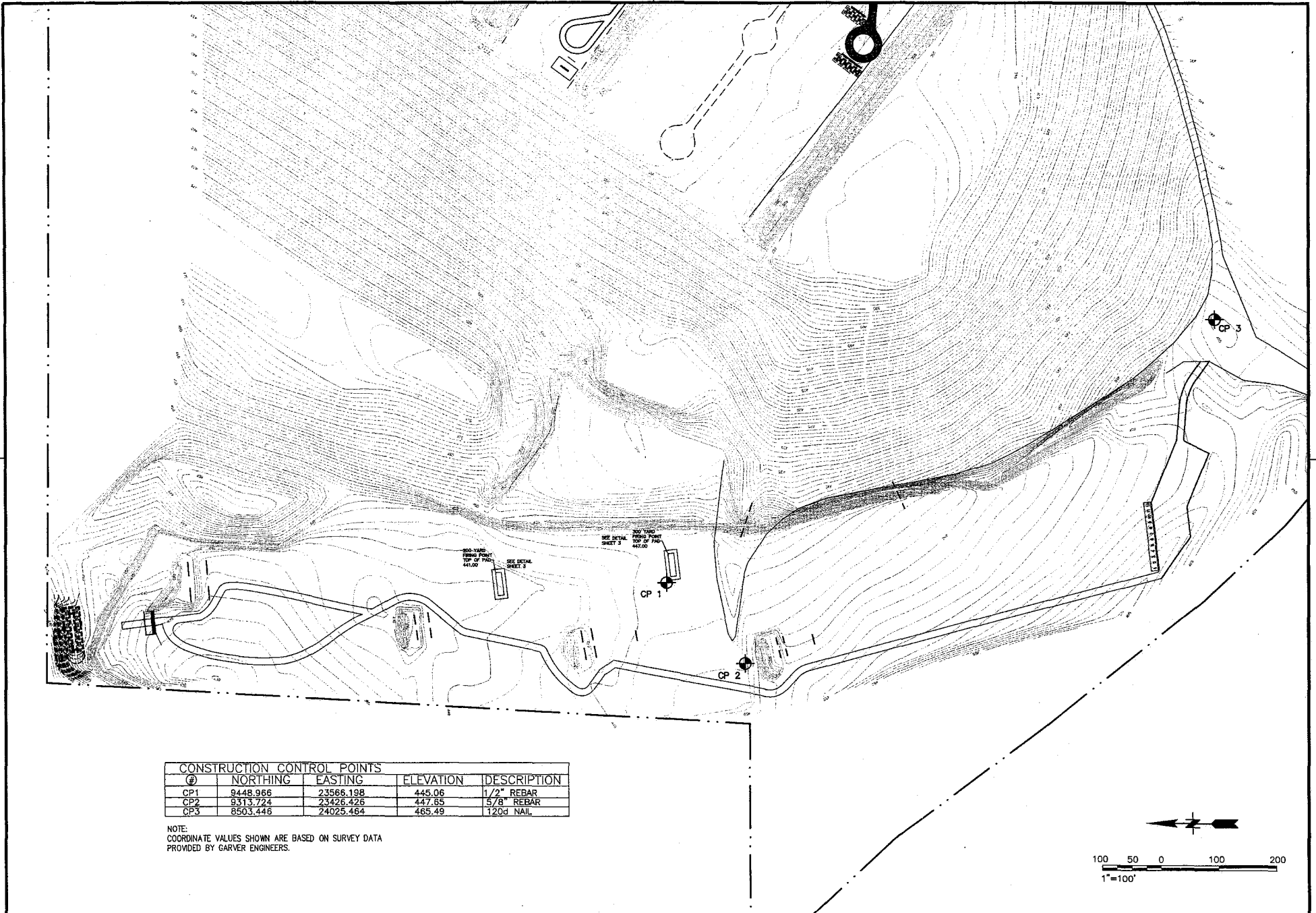
**PIT WALL DIMENSION PLAN
 HIGHPOWER RIFLE RANGE**

BENTON GUN CLUB
 SILHOUETTE RANGE COMMITTEE

ADDENDUM 1
 04/14/10



Phase I



CONSTRUCTION CONTROL POINTS				
①	NORTHING	EASTING	ELEVATION	DESCRIPTION
CP1	9448.966	23566.198	445.06	1/2" REBAR
CP2	9313.724	23426.426	447.65	5/8" REBAR
CP3	8503.446	24025.464	465.49	120d NAIL

NOTE:
 COORDINATE VALUES SHOWN ARE BASED ON SURVEY DATA
 PROVIDED BY GARVER ENGINEERS.

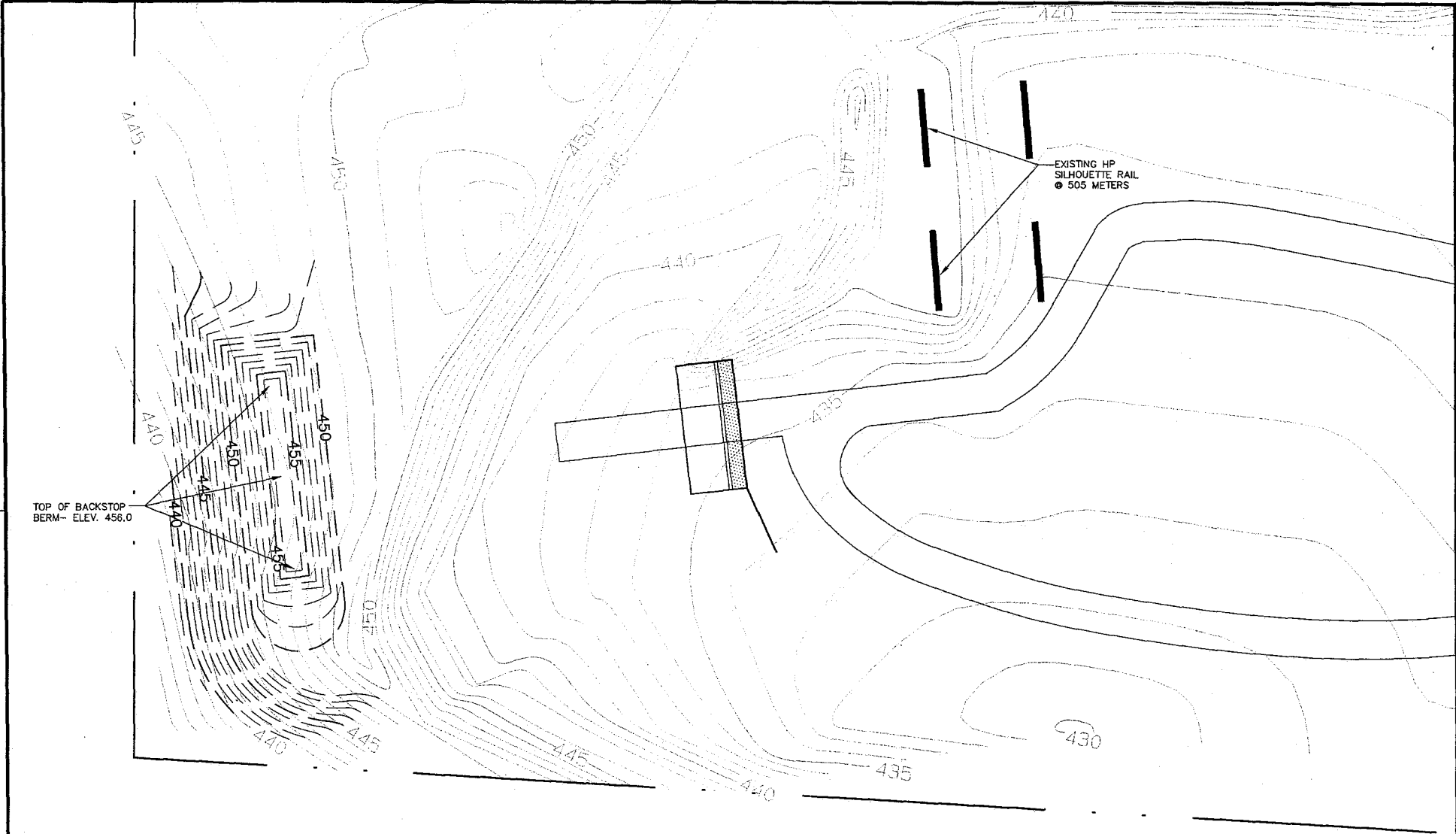
DSGN
 DR
 CHK
 APVD

HIGHPOWER RIFLE & SILHOUETTE RANGE
 BENTON GUN CLUB, SALINE COUNTY, ARKANSAS

HIGHPOWER RIFLE & SILHOUETTE RANGE
 CONSTRUCTION CONTROL SHEET

BENTON GUN CLUB
 SILHOUETTE RANGE COMMITTEE

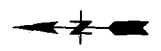
SHEET 4
 DWG NO.
 DATE 04-12-10
 PROJ NO. HP PITS-2010



EXISTING HP
SILHOUETTE RAIL
● 505 METERS

TOP OF BACKSTOP
BERM- ELEV. 456.0

--- EXISTING CONTOURS
- - - PROPOSED FINISHED GRADE CONTOURS



20 10 0 20 40
1"=20'

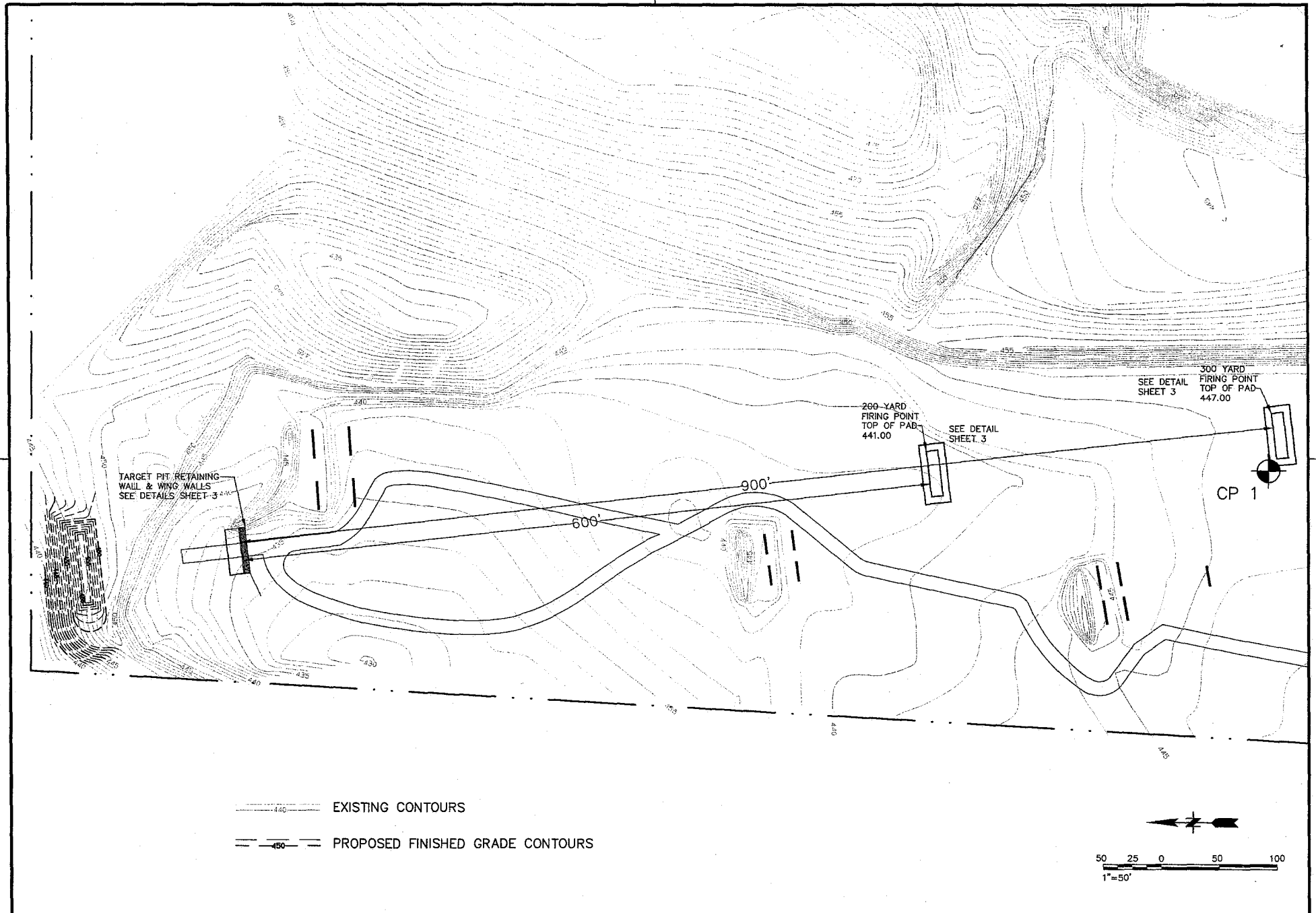
DSGN
DR
CHK
APVD

HIGHPOWER RIFLE & SILHOUETTE RANGE
BENTON GUN CLUB, SALINE COUNTY, ARKANSAS

HIGHPOWER RIFLE & SILHOUETTE RANGE
TARGET PIT GRADING PLAN

BENTON GUN CLUB
SILHOUETTE RANGE COMMITTEE

SHEET 2
DWG NO.
DATE 04-12-10
PROJ NO. HP PITS-2010



DSGN	HIGHPOWER RIFLE & SILHOUETTE RANGE BENTON GUN CLUB, SALINE COUNTY, ARKANSAS	HIGHPOWER RIFLE & SILHOUETTE RANGE SITE LAYOUT PLAN	BENTON GUN CLUB SILHOUETTE RANGE COMMITTEE	SHEET 1
DR				DWG NO.
CHK				DATE 04-12-10
APVD				PROJ NO. HP PITS-2010

EXAMPLE OF PITS

